



The Waterfront Office Towers



2023

ABOUT THIS PROJECT:

Market Segment:

General Construction

Contractor:

Roebbelen Contracting Inc.

Location:

City of Stockton,
California

Products Used:

Xypex Concentrate
Xypex Patch'n Plug
Xypex Xycrylic
Xypex Megamix I

DESCRIPTION

The project features an enclosing structure spanning 500 feet, with its walls reaching a height of around 9 feet. Built on a Concrete Masonry Unit (CMU) foundation, the structure faced significant issues of efflorescence within the basement area due to its closeness to the San Joaquin River, necessitating an extensive remedial approach.



Efflorescence may be indicative of water infiltration or drainage challenges. To proactively address and prevent this issue, it is paramount to prioritize effective waterproofing measures.

THE BEST SOLUTION

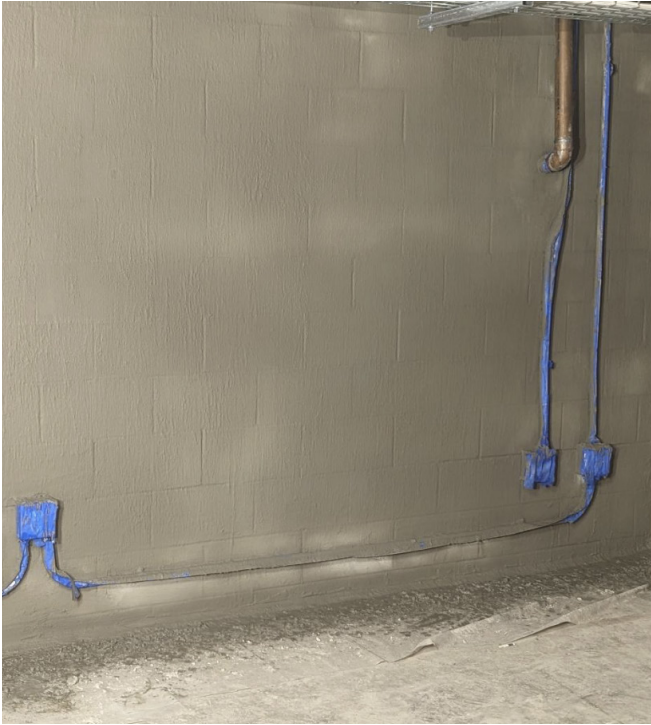
To address these concerns, Roebbelen Contracting Inc. strategically utilized a combination of XYPEX products, including Patch'n Plug, Concentrate, and MegaMix I.

The choice of these products was influenced by the proven effectiveness of the Mega Mix 1 system in dealing with CMU wall-related problems.

The restoration commenced with a detailed repair of cracks and joints, laying the foundation for further treatment steps. This was followed by the application of Xypex Concentrate, forming a critical part of the restoration strategy. The final stage involved applying Mega Mix 1, thereby ensuring the successful completion of the project.



Megamix 1 and Xycrylic Admix being sprayed on the wall.



Final saturated-surface-dry finish.